

B1 INSTALLATION DRAWING

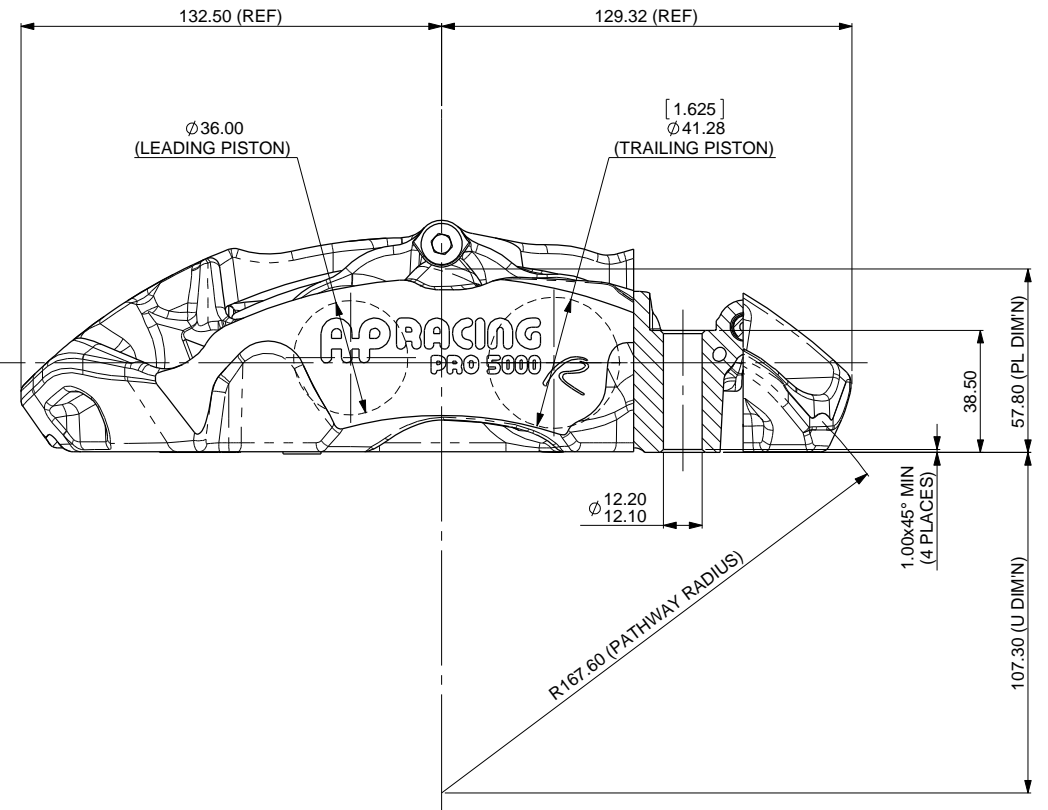
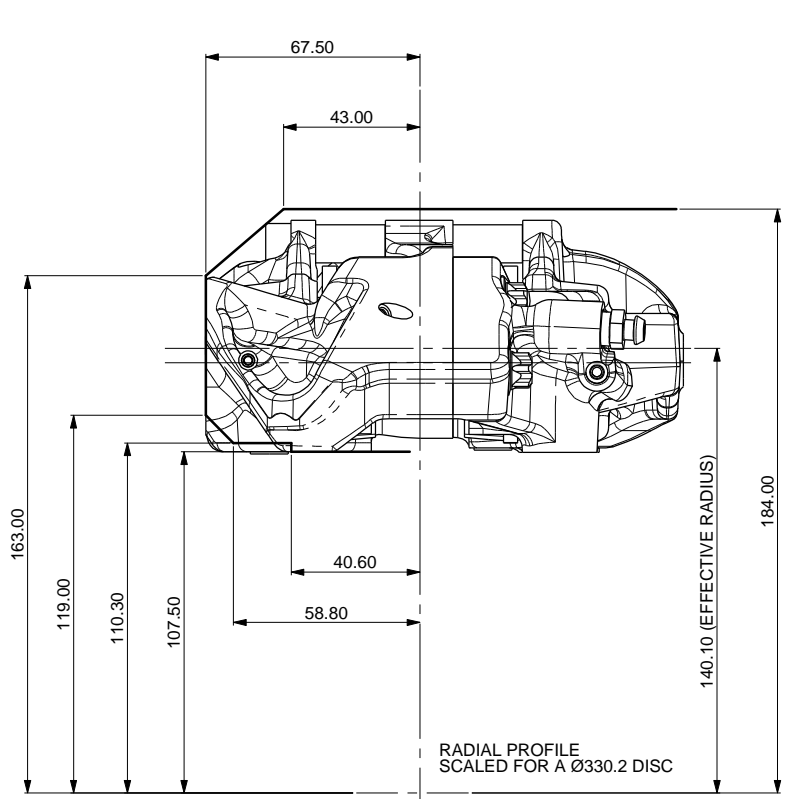
IF THIS DOCUMENT IS PRINTED IN HARDCOPY, IT IS FOR INFORMATION USE ONLY AND THEREFORE IS NOT SUBJECT TO UPDATING CONTROLS. ALWAYS REFER TO SOLIDWORKS VIEWER FOR LATEST ISSUE

FIRST ANGLE PROJECTION

THIS DRAWING IS CONFIDENTIAL AND IS SUPPLIED ON THE EXPRESS CONDITION THAT IT SHALL NOT BE LOANED OR COPIED OR DISCLOSED TO ANY OTHER PERSON OR USED FOR ANY OTHER PURPOSE WITHOUT THE WRITTEN CONSENT OF AP RACING LTD.

AP RACING
 AP Racing
 Wheler Road
 Coventry
 CV3 4LB
 Tel: +44 024 7663 9595
 Fax: +44 024 7663 9559
 e-mail: sales@ap racing.co.uk
 Web site: HTTP://www.ap racing.com

© AP Racing Ltd. 2014



GENERAL DESCRIPTION
4 PISTON DIFFERENTIAL BORE CALIPER TO SUIT UP TO 330.2 x 28 IRON DISC.

APPLICATION
GENERAL USE CALIPER

TECHNICAL INFORMATION
TOTAL PISTON AREA: 47.12cm²
BODY MATERIAL: ALUMINIUM ALLOY
PISTON MATERIAL: STAINLESS STEEL

ASSEMBLY WEIGHT (LESS PADS): 2.16Kg

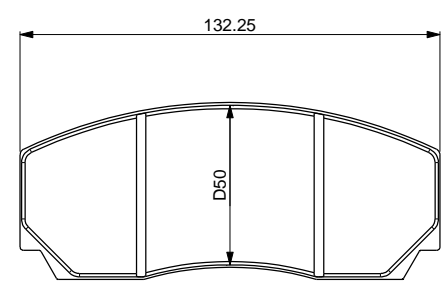
INSTALLATION INFORMATION
DISC & CALIPER MOUNTING TOLERANCES TO BE SUCH THAT THE DISC IS CENTRAL TO THE CALIPER TO WITHIN ±0.5mm. DISC DIAMETRAL CLEARANCE SHOULD BE 2.5mm NOMINAL FROM DISC O/D TO PATHWAY.

KEY TO DIMENSIONS
'PL' DIMN : TOP OF PAD MATERIAL TO MOUNTING BOSS FACE, WITH PAD SITTING DOWN ON LEDGE.
'U' DIMN : WHEEL CENTRE LINE TO CALIPER MOUNTING BOSS FACE = (DISC Ø/2) - PL DIMN

AP RACING TECHNICAL SECTION WILL BE PLEASED TO ADVISE ON THE MOST SUITABLE EQUIPMENT FOR ANY PARTICULAR APPLICATION.

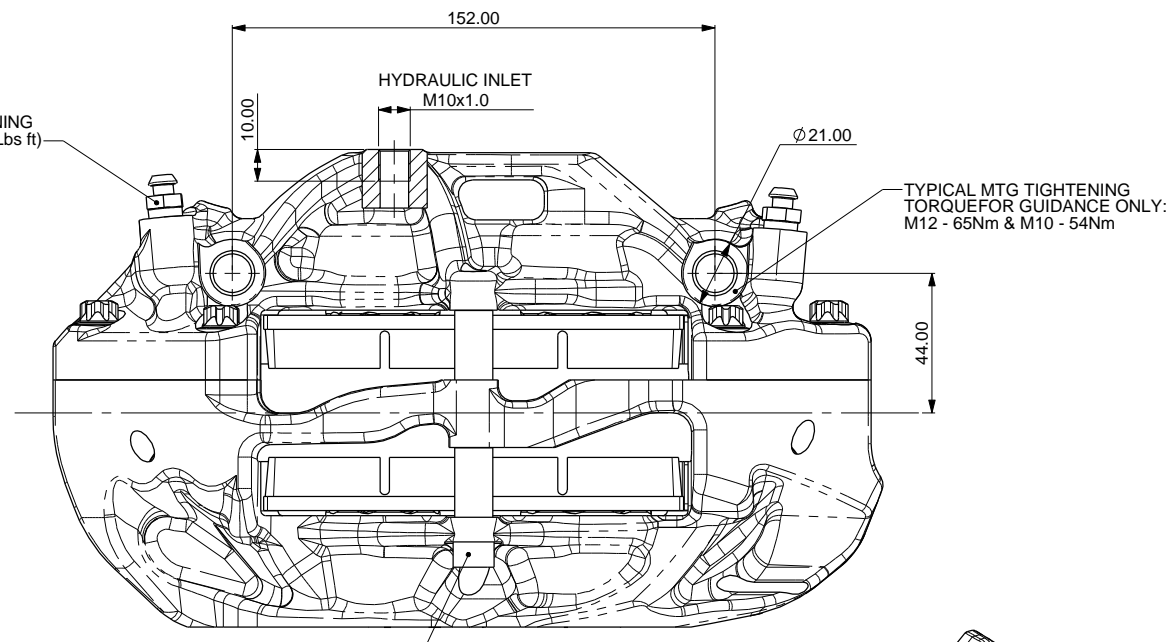
CALIPER PART NUMBERS
CP9440-2S4L - RIGHT HAND
CP9440-3S4L - LEFT HAND

Issue No.	Alterations		Zone	Initials
	Date & No.	Particulars		
1	28/04/14 B6957	FIRST ISSUE	#	JH

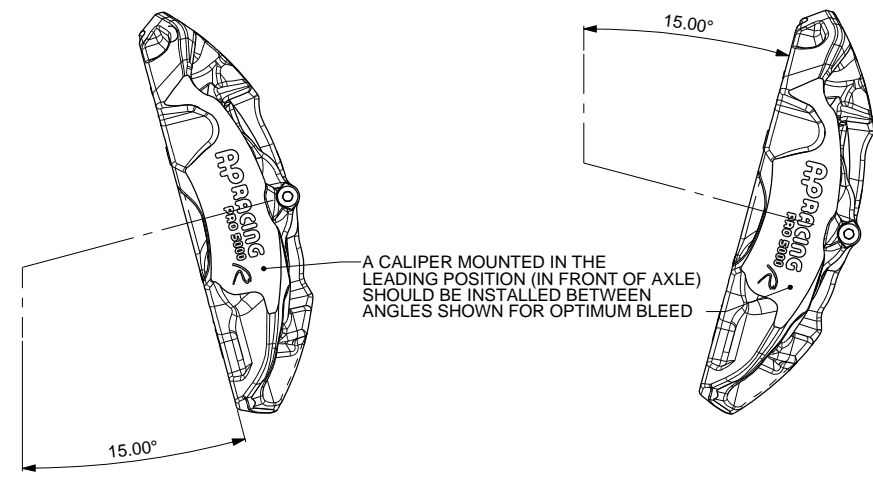
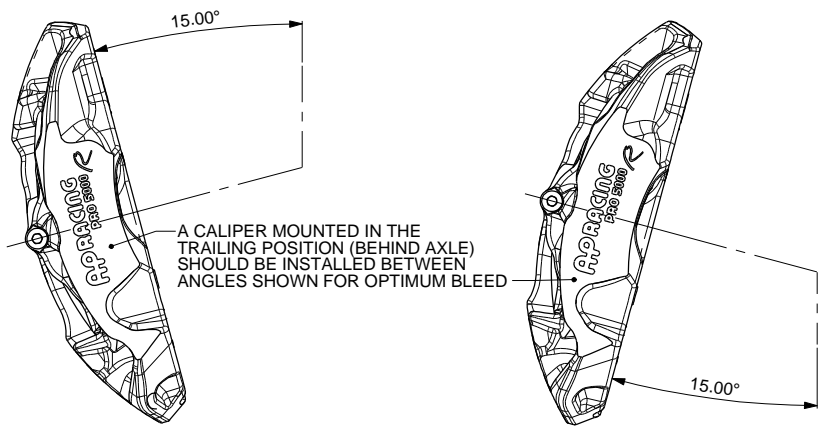


CP3215 PAD FAMILY
PAD AREA - 57.37CM²
PAD VOLUME - 97.53CM³

BLEED SCREW TIGHTENING TORQUE 17.0 Nm (12.5 Lbs ft)



PAD RETAINING BOLT SHOULD BE TIGHTENED TO A TORQUE OF 13.1Nm (9.7 Lbs ft)



SCALE 1:1 SHEET 1 OF 2
 DRAWN J.HERITAGE
 APPROVED #
 DERIVED FROM #
 TITLE
 GENERAL USE 4-PISTON
 BRAKE CALIPER
 DRG NO. CP9440-1CD

B1 INSTALLATION DRAWING

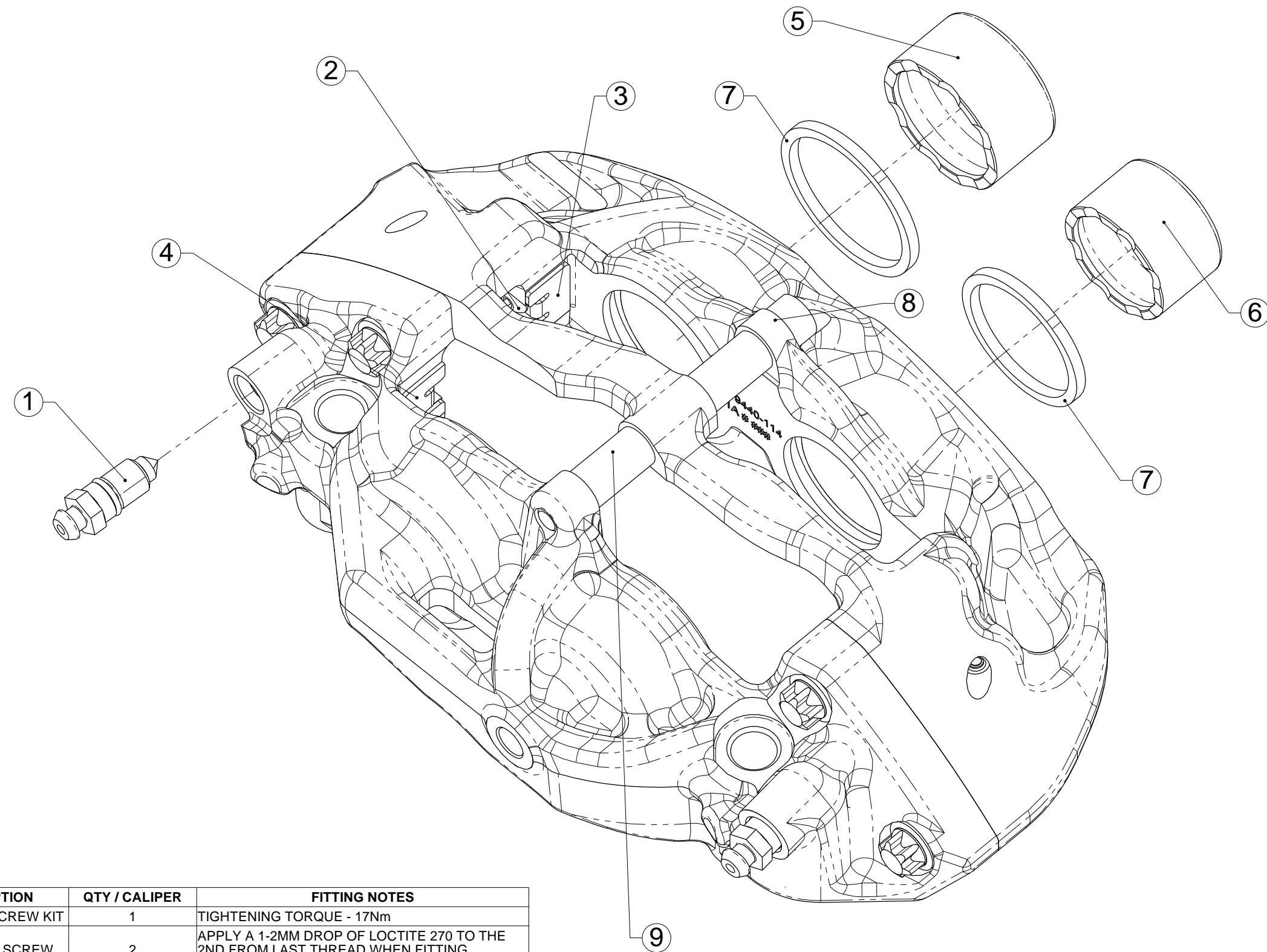
IF THIS DOCUMENT IS PRINTED IN HARDCOPY, IT IS FOR INFORMATION USE ONLY AND THEREFORE IS NOT SUBJECT TO UPDATING CONTROLS. ALWAYS REFER TO SOLIDWORKS VIEWER FOR LATEST ISSUE

FIRST ANGLE PROJECTION

THIS DRAWING IS CONFIDENTIAL AND IS SUPPLIED ON THE EXPRESS CONDITION THAT IT SHALL NOT BE LOANED OR COPIED OR DISCLOSED TO ANY OTHER PERSON OR USED FOR ANY OTHER PURPOSE WITHOUT THE WRITTEN CONSENT OF AP RACING LTD.

AP RACING
 AP Racing
 Wheler Road
 Coventry
 CV3 4LB
 Tel: +44 024 7663 9595
 Fax: +44 024 7663 9559
 e-mail: sales@apracings.co.uk
 Web site: HTTP://www.apracings.com

© AP Racing Ltd. 2014



REF	PART NUMBER	DESCRIPTION	QTY / CALIPER	FITTING NOTES
1	CP3880-1	M10 BLEED SCREW KIT	1	TIGHTENING TORQUE - 17Nm
2	CP9440-116	M5 BUTTON SCREW	2	APPLY A 1-2MM DROP OF LOCTITE 270 TO THE 2ND FROM LAST THREAD WHEN FITTING. TIGHTENING TORQUE - 3.7Nm
3	CP9440-108	RH WEARPLATE	1	APPLY 736 RTV SILICONE SPARINGLY BEHIND THE ABUTMENT PLATE ENSURING ENTIRE CONTACT FACE IS COVERED. APPLY PRESSURE TO ABUTMENT PLATE WHEN FITTING TO ENSURE MINIMUM FILM THICKNESS AND AVOID ANY GAP.
4	CP9440-109	LH WEARPLATE		ENSURE ABUTMENT PLATE SITS CORRECTLY AGAINST CALIPER BODY BEFORE FITTING RETAINING SCREW.
5	CP9440-106	Ø1 5/8" SST PISTON	2	
6	CP9440-107	Ø36MM SST PISTON	2	
7	CP8518-HK	PISTON SEAL KIT	1	REFER TO PUBLICATION REF: P14.290 & P14.220
8	CP3796-121ST	M8 CAP SCREW	1	TIGHTENING TORQUE - 13.1Nm
9	CP9440-110	PAD RETAINER TUBE	2	

Issue No.	Alterations		Zone	Initials
	Date & No.	Particulars		

SCALE 1:1 SHEET 2 OF 2

DRAWN J.HERITAGE

APPROVED

DERIVED FROM #

TITLE
 GENERAL USE 4-PISTON
 BRAKE CALIPER

DRG NO. CP9440-1CD