

# essex

**"Race Parts For Your Car"**

## Rear Competition Brake System Installation Guide: 2015+ Mustang rear competition system



13.99.00035

Version 1.0

**Warning:** Essex Competition kits are for off-road use only. The components in these systems are not designed for use on public roads.

## Disclaimer of Warranty

By purchasing this product and opening this box, purchaser expressly acknowledges, understands and agrees that they take, select and purchase this brake system, parts, and equipment from Essex Parts Services, Inc., its affiliates, suppliers, distributors, and agents (collectively, “Essex”) “as is” and “with all faults.” The entire risk as to the quality and performance of this brake system, parts, or equipment is with the purchaser. Should the goods prove defective following their purchase, the purchaser assumes the entire cost for all necessary servicing or repair or any resulting liability. Essex is not responsible for any damage, consequential or otherwise, for equipment failure or mal-performance after installation.

Essex makes no warranties whatsoever, expressed or implied, oral or written, to purchasers or any users of these products. Essex expressly disclaims any implied warranty of merchantability or warranty of fitness for a particular purpose, including fitness of these systems, parts or equipment for racing or road use. No warranty or representation is made to the product’s ability to protect the user from injury or death. The user assumes all risk.

By purchasing this product and opening this box, purchaser expressly affirms that they are relying upon their own skill and judgment in selecting and purchasing these goods as suitable for purchasers’ intended use. Purchaser understands and agrees that no officer, director, salesman, distributor, or agent of Essex has any authority to make any statement contrary to the terms of this disclaimer and agreement. On the contrary, Essex disavows any statement contrary to what is written above.

## Installation

The brake system on any vehicle is a safety device. It is strongly recommended that any personnel performing brake-related replacement or maintenance operations should be competent and certified, using proper tools and equipment.

## Brake to Wheel Clearance

This brake system is compact but the high offset design of some factory wheels prohibits their use without aftermarket wheel spacers and extended wheel studs/bolts. Some aftermarket wheels may fit over the brake kit without spacers but it is up to the consumer to verify that his or her wheels will work with the kit. Essex has wheel templates available for download at [www.essexparts.com](http://www.essexparts.com). ***The customer is solely responsible for verifying wheel fitment.***

## Brake Noise, Vibration, and Harshness (NVH)

Brake noise can be caused by many factors. Following the bed-in procedures outlined in this manual will help reduce brake noise to the extent possible, but keep in mind that high performance brake pads do tend to make more noise than typical OEM pads. The customer is solely responsible for any NVH related problems with the brake system (squealing, scraping, vibration, judder, etc.).

## Caliper, Bracket, and Hat Finish

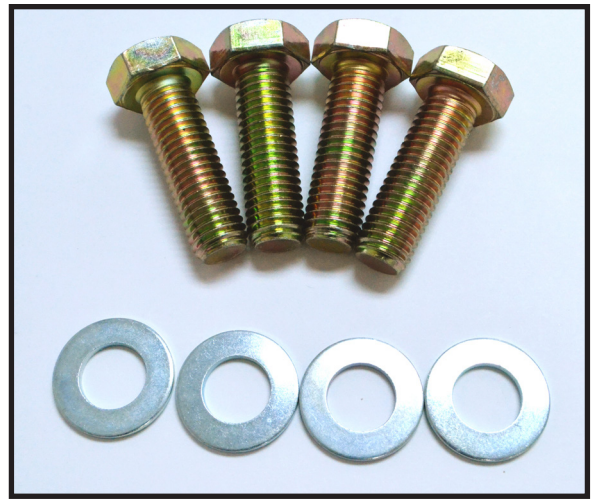
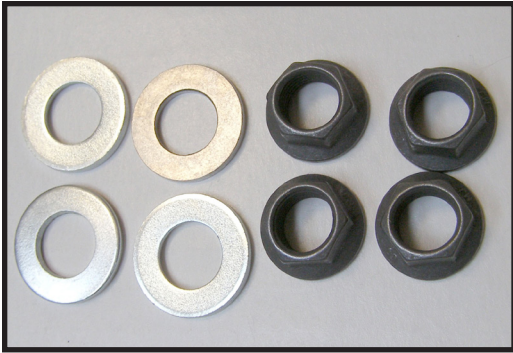
Some components of this system are anodized aluminum, and as such are subject to corrosion when introduced to corrosive agents such as brake fluid, road salt, wheel cleaners, certain soaps, etc. Use caution when cleaning and servicing the system components.

# What's in the Boxes?

Your brake system is packaged in two separate boxes. With the exception of attachment hardware, driver (left) and passenger (right) components have been intentionally separated for ease of installation:

## Box One (Left/Driver)

- Left CP9450 (CP9450-3S4L) or CP5040 (#CP5040-53S4L) AP Racing four piston caliper.
- Left 13.04.20050 assembly includes AP Racing J Hook brake disc (#CP6565-229GA) with attached anodized aluminum hat; Please note the direction of the J Hook slot pattern in step 7 of this manual for proper orientation.
- Left anodized aluminum caliper mounting bracket (#13.03.02067-CP9450; 13.03.02024-CP5040) assembly with studs (identical to the right hand bracket on this application)
- Four small OD 10mm washers for the above studs (#10.02.00016)
- Four 10mm jet nuts for the above studs (#10 10154)



- Four M14x45mm hex head caliper bracket mounting bolts (attaches caliper bracket to upright) (#10.02.00011)
- Four M12 washers for the above bolts (#10.02.00010)
- One tube of Loctite 271 (red)
- One pair of rear Spiegler Stainless Steel Brake lines with included brackets (#13.02.06000), including rubber caps for sealing off brake hard line

## Box Two (Right/Passenger)

- Right CP9450 (CP9450-2S4L) or CP5040 (#CP5040-52S4L) AP Racing four piston caliper.
- Right 13.04.10050 assembly includes AP Racing J Hook brake disc (#CP6565-228GA), with attached anodized aluminum hat; Please note the direction of the J Hook slot pattern in step 7 of this manual for proper orientation
- Left anodized aluminum caliper mounting bracket (#13.03.02067-CP9450; 13.03.02024-CP5040) assembly with studs (identical to the right hand bracket on this application)



## Required tools

Torque wrenches capable of 150in/lbs to 90 lb.-ft.  
Breaker bar- OEM caliper bolt and wheel removal  
14mm socket/wrench - OE Caliper bolts  
18mm socket/wrench - OE Caliper carrier bolts  
10mm socket/wrench - parking brake bracket  
6mm allen/hex socket/key-disc retaining bolts, caliper bridge bolt  
21, 22mm box wrenches and/or sockets/ratchet-caliper to spindle bolts  
13mm, 14mm, 17mm, flare wrenches-brake line removal/installation  
17mm socket- Wheel lug nuts  
12mm socket- Caliper stud nuts  
7/16"/11mm box end wrench- Caliper bleed screw  
Rags- Brake fluid  
Scotchbrite or small wire brush-cleaning hub faces  
Brake fluid cleaning solution  
Small Funnel- Brake fluid  
Eye protection  
Gloves  
2 or 3 500ml bottles of brake fluid- Essex recommends AP Racing R3 or R4 brake fluid  
Pair of jack stands- If you can't figure this out, drop the other tools and walk away!

## Note on brake ducts

Essex cannot verify fitment or compatibility of our system with third-party brake duct systems, so please fit and use them at your own risk. If you do plan to use brake ducts in conjunction with our system, please ***do not bolt anything between the caliper bracket and the upright***. The caliper bracket was precisely designed to bolt directly against the upright without any shims, spacers, etc. If you are bolting a brake duct to the upright, please attach it on the back side of the upright. Also, please make sure that you are maintaining enough thread engagement on the bolts holding the caliper bracket to the upright.

---

## Installation procedure

### Step 1-Wash both brake discs with soap and water (skip if burnished)

If you purchased this system with burnished discs, skip to step 2. The discs in our system are coated with a water soluble rust inhibitor that must be removed prior to use. Use soap and water to clean them. Dish detergent works well. The discs will start to rust immediately (as they do when you wash your car), so please don't be alarmed when that occurs.

### Step 2-Lift and secure vehicle, remove wheel(s)

- Apply the parking brake and chock the front wheels.
- Put a shop towel under your driver windshield wiper. Don't remove it until the job is done and you've torqued your wheels properly.
- Put on your gloves and eye protection.
- Slightly loosen rear wheel lug nuts, but do not remove.
- Lift the rear of the car on a flat, clean, and stable surface per manufacturer recommendations.
- Secure the vehicle on two jack stands, or one if you'd like to install one side at a time.

**\*\*\*Never leave your vehicle supported with only a floor jack. ALWAYS USE JACK STANDS.\*\*\***

- Remove rear wheel(s).

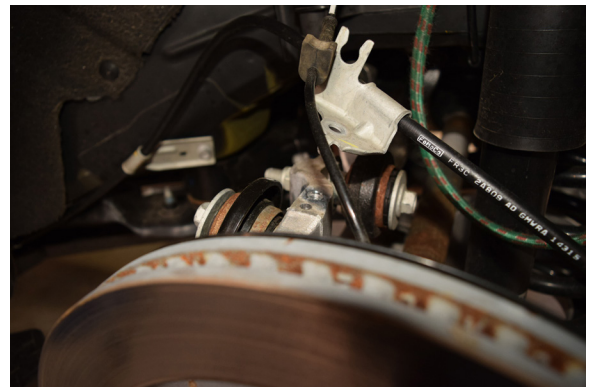
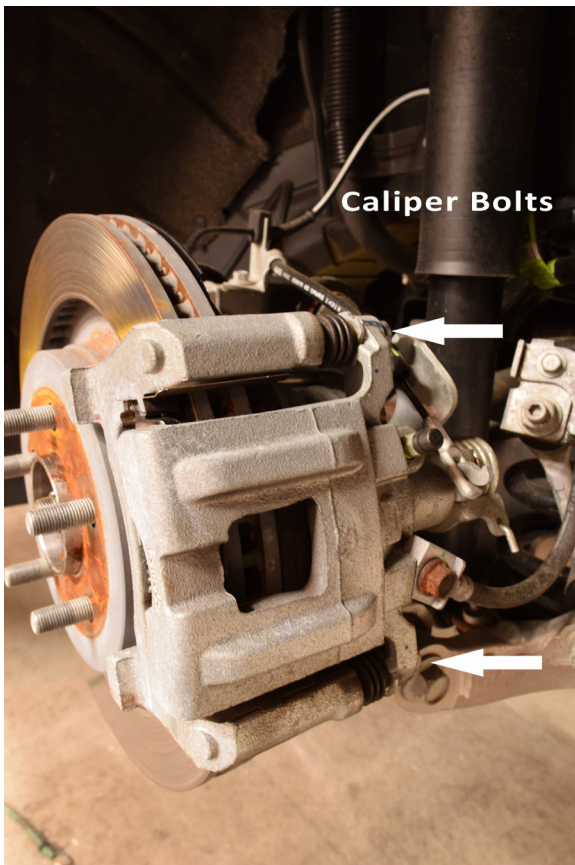
## Step 3-Detach hard line brake connection

**Warning- Brake fluid is corrosive, flammable, and will damage painted and anodized finishes. Clean up all spills immediately.**

- Place a tray and/or rags below the brake hard line connection on inner fender well.
- Before removing the OEM brake line, take careful note (or a picture if necessary) of the routing. The Spiegler brake line included with our system will be installed in the exact same orientation.
- Using your line/flare wrench, disconnect factory brake line from hard line connection.
- Immediately cover the hard line attachment point with the provided black rubber caps to halt brake fluid loss.
- Use a 13mm socket/wrench to remove bracket holding the brake line to inner fender and 10mm to remove bracket holding line to the suspension.
- Cap the end of the OEM brake line to prevent brake fluid spillage with the supplied rubber line cap.

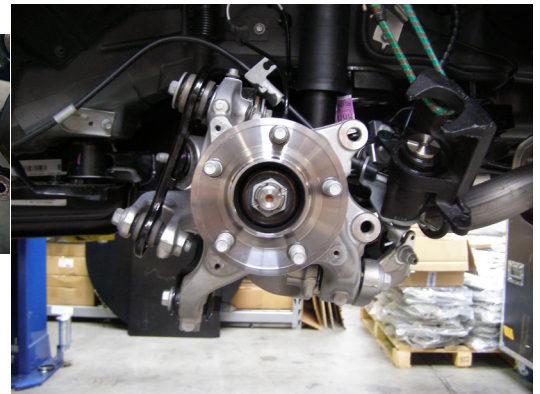
## Step 4 - Remove OE caliper

- Locate and remove caliper bolts with 14mm wrench/socket
- Carefully pry caliper off carrier/disc.
- Using 10mm wrench/socket remove parking brake cable bracket.
- Unhook parking brake cable from caliper. Secure or remove parking brake cable.
- Remove the caliper and set it aside.
- Locate and remove the two caliper carrier bolts attached to spindle and with 18mm socket/wrench remove carrier.



## Step 5 - Remove OE brake disc, backing plate and parking brake cable

- Remove OEM disc from hub.
- Using some scotch brite, cleaner (WD-40 works well) and rags, clean the hub face and flange to remove any rust and provide a nice clean and flat surface for your new discs to seat.
- With a 10mm wrench, remove the 3 screws holding the OE backing plate and remove plate.



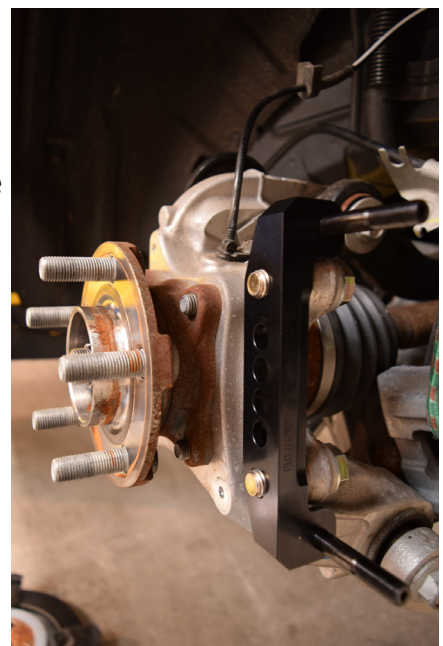
**The rear parking brake mechanism will be disabled with the Essex competition brake system.**

- Pry one end of the torsion spring from its perch so it is no longer applying torque to the arm on the back side of the caliper.
- Rotate the arm in the direction of the cable housing mount.
- Slide the cable housing out of the bracket. There two tabs on the end of the housing that will need to be compressed to let the housing slide through the hole in the bracket.
- Pull the cable up through the slot in the bracket and this allows you to angle the cable allowing the cable end to be removed from the arm to which it connects.
- From here you can either secure the end of the cable out of the way in the wheel well or remove from the vehicle completely (see factory service manual).
- It is recommended to secure the sensor wire in the wheel well. You can cut/modify the OE cable bracket to retain the sensor provision if desired.



## Step 6 - Install Essex caliper bracket

- Apply one small drop of red Loctite™ 271 (red) to the threads of the hex head bolts included with our system (#10.02.00017). Please be aware that excessive use of red loctite will make removal extremely difficult.
- Using a 22mm wrench and the supplied washers (#10.02.00011), attach the caliper bracket to upright in the orientation indicated on the bracket. The left and right caliper brackets are identical for this application. Make sure that the bracket sits flat against the machined face of the spindle. **Torque to 70 lb-ft.**





## Step 7 - Install AP Racing J Hook racing brake disc

- Install the AP Racing Heavy Duty J Hook 2-piece disc over the wheel studs. To ensure proper airflow and cooling, make sure the discs are on the proper side of the car per the pics below. The J Hook slot pattern and internal vane design can both be used as reference points.

*Ex: Driver side/left hand brake disc:*

Driver Side Disc



*Ex: Passenger side/right hand brake disc:*

Passenger Side Disc



## Step 8 - Install AP Racing rear brake caliper

- Verify that you are putting the proper caliper on the correct side of the car. The bleed screws on your caliper should be pointing up when installed on the car.
- Using a 6mm hex wrench, remove the pad retention bolt from the top of the caliper.
- Slide caliper onto bracket studs making sure it seats flat onto bracket.
- Using a 12mm socket and the supplied washers (#10.02.00016), secure the caliper to the caliper bracket with the jet nuts (#10.02.00008). **Torque to 23 lb-ft.**





## Step 9 - Install Spiegler Stainless brake line

- Install the banjo bolt on the end of the brake line with a copper crush washer on both sides of the line banjo fitting. Hand-thread the bolt into the inlet port on the caliper. We recommend the banjo fitting is pointed down and slightly inboard toward the rear suspension.
- Install the included brake line bracket at the OE location and secure with OE hardware.
- Remove the rubber cap from the hard line on the car, and insert the brake line into the bracket. Hand-tighten the hard line fitting into the Spiegler line. Use the 13mm line wrench and 17mm box wrench to tighten the connection. Do not overtighten. Just make sure the connection is snug and leak free. Install retaining clip.
- Attach mid-length bracket to upright at the factory location using original hardware.
- Make sure the brake line is not touching anything, binding, or rubbing. If necessary, slightly loosen the banjo bolt at the caliper, and adjust the routing of the line until there is no interference and line has enough slack.
- If line seems twisted, use the supplied plastic blocks and a pair of pliers to twist fitting so that the line is not overly twisted. See brake line packaging for instructions.
- Torque the banjo bolt with a 14mm socket to **18-22 lb-ft**.

## Step 10 - Install brake pads (DO NOT SKIP THIS STEP)

- Slide the included AP Racing brake pads into the calipers. If you do not install your pads during this step, you will potentially have a big mess on your hands when you attempt to bleed your brakes!
- Verify the pads sit properly on the disc and that the top edge of the pads are level with the outside edge of the disc.
- Using a 6mm hex wrench, reinstall the pad retention bolt removed in Step 7 above.

## Step 11 - Repeat steps 3 thru 10 on the other side of the vehicle



## Step 12 - Bleed the brake system

For use with our system, Essex recommends AP Racing R4 brake fluid or AP Racing R3 brake fluid. Both are always in stock and available through Essex and our distributors. We recommend purchasing three bottles (standard 500ml size) of your preferred fluid to complete the installation.

The goal of bleeding the brakes is to remove all of the old fluid from the system, replacing it with your new fluid. With a single brake fluid reservoir (which your car has), fluid in the front and the rear of the car will mix. You therefore need to bleed all four corners of the car. The caliper bleeding sequence is to start with the corner of the car furthest from the master cylinder (mc), and work your way closer to the mc: Passenger rear, driver rear, passenger front, driver front. For CP5040 calipers with two top bleed screws, the proper bleeding sequence is the outboard bleed screw followed by the outboard bleed screw. For CP9450 calipers, bleed bottom screw first and finish with the top bleed screw. Use a 11mm or 7/16" box end wrench on the caliper bleed screws, and an appropriate bleeder bottle (available through Essex).

When loosening and tightening the bleed screws during this process, just snug them and do not over-tighten.

The final torque value on your last tightening of the **bleed screw should be 150 lb-in**. An easy rule of thumb to remember when tightening bleed screws is that you should never apply more pressure than you could exert with one finger.

- Make sure brake pads are secured in both calipers.
- Open the top of your brake fluid reservoir, and make sure it is mostly full. At no point during the bleeding process should you allow the level of brake fluid to go below the minimum level marking.
- Have some rags and brake cleaner handy, and place a drip pan or cardboard below the caliper you are bleeding
- Position your 11mm or 7/16" box end over the outboard or bottom bleed screw on the passenger rear caliper, followed by the hose from your bleeder bottle.
- With a friend behind the wheel and working the brake pedal, loosen the bleed screw and have your friend pump the brakes to the floor 5 or 6 times to flow some of the old brake fluid out of the system
- You should see some air bubbles flowing through the bleeder hose. Have your friend hold the brake pedal to the floor, and snug the bleed screw back up.
- Check the fluid in your reservoir, and refill to the max line if necessary.
- Tell your friend, "pressure." S/he will apply pressure to the brake pedal. Loosen the bleed screw. The pedal will slowly drop to the floor as fluid flows out of the bleed screw. When the pedal hits the floor your friend holds it there, and tells you, "down." Tighten the bleed screw. Repeat this process until no more air bubbles are flowing out of the caliper. On your friend's final press, close the bleed screw when his foot is half way to the floor.
- Check the fluid in your reservoir, and refill to the max line if necessary.
- Repeat this procedure on the inside or upper bleed screw on the passenger rear.
- Repeat the above procedure in the prescribed caliper order, continually checking the fluid level in your reservoir. It will drain quickly, so keep a close eye on it.
- When you are done bleeding, wipe up any brake fluid on the calipers, lines, etc. with brake clean and rags. It will destroy the finish of any painted surface it touches.
- Fill your fluid reservoir to the max line and tighten the cap.
- Have your friend apply pressure to the brake pedal, while you examine the connections at all corners of the car for leaks.

**Please note: After bleeding the system, there will remain a small amount of residual brake fluid inside the bleed screws and/or around the threads. As the calipers heat up, this fluid will force its way out and may look like the calipers are leaking. This is perfectly normal and will go away after a short time. If you experience a spongy pedal or continue to see fluid leaking after a day or so then re-torque the bleed screws to the proper 150 in/lbs.**

## Step 13 - Install wheels

Check wheel clearance before tightening. At times adhesive wheel weights inside the wheel barrel could potentially come into contact with your calipers.

Torque your wheels to manufacturer's recommendation.

## Step 14 - Safety check

Drive the car at low speeds in a safe location to ensure proper functioning of the brakes.

## Step 15 - Bedding and preparation

Properly preparing your new brake pads before heavy use is extremely important. Please visit [www.essexparts.com/learning-center](http://www.essexparts.com/learning-center) for detailed bedding information in both written and video format.

The goal of bedding-in your brake pads and discs is to mate them together properly and prepare them for heavy use. When prepared properly, or bed-in, your pads will transfer a thin layer of material to the disc face (transfer layer). The pads in your caliper will then actually ride on that thin layer of pad material you've put down on the rotor, rather than rubbing directly on the iron rotor face. A good transfer layer is going to give you superior brake pedal feel, less noise, superior pad wear, and lower the chances of cracking your discs.

### Important Notes- PLEASE READ!

First, make sure you have a safe location to perform a proper bed-in. You need a stretch of asphalt with long straights, good visibility, and no potential obstructions. Make sure you are in a position to safely, legally, and repeatedly hit the necessary speeds to perform the bed-in procedure. A controlled racetrack is the best place to perform this procedure. AP Racing and Essex in no way suggest or condone speeding or breaking the law in your car, nor do we take responsibility for any damage or injury that occurs as a result of using our product or these procedures. You are performing the bed-in procedure at your own risk. For complete details, please read the Disclaimer of Warranty located on the previous page of this document.

### Bed-in Procedure:

**During these procedures, it's critical that you never come to a complete stop with your foot on the brake pedal.** If you have brake ducts on your car, you may want to block them off to allow your brake system to heat up easily.

The procedure outlined below is a generic procedure for most types of mild race pad. Please check your pad manufacturer's recommended bed-in procedure.

1. Accelerate to approximately 60mph and then decelerate down to 5 mph. If your car has ABS, you should try to hold the brakes at a point just before ABS intervention.
2. Once the car slows to 5mph, immediately accelerate back up to about 60mph, and brake again to roughly 5mph.
3. Repeat this series of stopping and accelerating 8 to 10 times. Again, do not come to a complete stop with your foot on the brake pedal.
4. Cool the brake system down by cruising at 45mph+ for 5 to 10 minutes.
5. Visually inspect your discs. They should be a blue/grey color (instead of shiny silver), and have an even layer of pad material across and around the entire rotor face.
6. If the pads don't have a layer of pad material on them, perform another series of stops in the manner outlined above.

For more details, photos, theory discussion, and video instruction on bedding-in brakes, please visit [essexparts.com/learning-center](http://essexparts.com/learning-center)

**Notes:**

**Thank you again for choosing Essex and AP Racing. If you need any assistance, please call customer support at 704-824-6030 Mon-Fri 8am-5pm, or email [support@essexparts.com](mailto:support@essexparts.com)**



